

City of Clayton Trails and Landscape Committee



Annual Report
2010-11

Message from the Chair:

The trails and landscape committee is made up of every day Claytonians. We have regular jobs and typical family lives. We love our town and take pride in our beautiful surroundings. We walk our dogs, hang out at the grove, ride our bikes, attend church, coach little league, and read the Pioneer. We differ in shape, size, and gender. Some lean left some lean right. Some have full heads of hair, others not so much. Some are young while others are more experienced. The diversity of this committee mirrors that of Clayton. Though each member is different we all share strong common bonds. We are all volunteers. We each have a sense of civic responsibility. We are proud of the extensive trail network and the beautiful landscape that our community has to offer. Each member knows that by volunteering to serve on the TLC, we are doing our part to make sure Clayton remains the jewel of Contra Costa County and one of the most desirable places to live in the country.

In 2007, the citizens of Clayton approved Measure B. Measure B created a tax on each parcel located in Clayton. Measure B funds are for the sole use by the City Landscape Maintenance District which includes our trails, the fountain, roadway medians, open space fire abatement and the removal of noxious weeds in the hills of Oakhurst. Measure B also created a citizen oversight board with the purpose of making sure that the money is used for the purposes intended, hence the Trails and Landscape Committee was formed. Our #1 task is to watch the money. As chair of this committee, I can assure all of the residents in Clayton that we are watching how their hard-earned money is spent.

In May of 2011, the TLC met to discuss the proposed budget for fiscal year 2011-2012. We had a lively debate and after two hours of back and forth we were able to propose a budget that we felt would best serve the city. I was happy to be a part of that debate. To see common every day citizens questioning their local government and arguing points for and against certain aspects of the budget reaffirmed that grand concept of "Government for the people, by the people."

I would like to thank Committee members Virginia Siegel, Lorraine Mole, Kelly Marshall, Robert Erich, and Bob Steiner for their dedication. I would also like to extend a sincere thank you to Mark Janney, the City Staff, Hank Stafford, Laura Hoffmeister and the City Maintenance crew. Our meetings start at 7:00 PM. Instead of going home after work, Mark Janney and Laura Hoffmeister attend our meetings in good spirits and come well prepared with all the critical information that their respective departments generate. Talk about a long day at the office! I would like to thank everyone who participated and for the time that you sacrificed, because of your desire to improve our community.

My last point is a message to the Clayton Community at large. The TLC needs more members. A total of 11 people can serve. Currently there are only six members. Some of our members are on their second term and they will be retiring on January 1, 2012. We could then possibly be down to only three members. This committee is a vital requirement of the Measure B initiative and it needs regular citizens to participate. I encourage all who have a stake in the way our town looks, or those who simply enjoy the trails and the landscaping, to join the TLC. You will not regret it.

Thank you.

Jake Pauline

Jake Pauline
Chair

LANDSCAPE MAINTENANCE DISTRICT CELEBRATES ITS FOURTH YEAR:

The Citywide Landscape Maintenance District (“District”) ended its Fourth year of operation on June 30, 2011. It operates and maintains the public roadway landscaping and its irrigation system, the trail system, and the “Clayton fountain”. It also provides weed abatement and fire breaks in the open spaces. The District does not include any of the city parks/sports fields, the City Hall and Library Landscape , or the downtown Grove Park which are funded by other taxes.

Measure B, passed by voters in June 2007, established a Citizens’ Oversight Committee that is commonly known as the Trails and Landscaping Committee (“TLC”) which advises the City Council and staff on matters concerning the District budget, priorities, and responsibilities. The TLC consists of up to eleven 11 non-paid, volunteer citizens of Clayton and the Vice Mayor who serves as the City Council’s non-voting representative in an ex-officio liaison capacity. The TLC currently meets quarterly to oversee the operation of the District.

2010-2011 TLC MEMBERS:

Citizens and their respective terms who are currently serving as members of the TLC:

Howard Geller	(Ex-Officio)
Hank Strafford	(Ex-Officio-Alternate)
Virginia Siegel	June 2009 - December 2011
Lorraine Mole	June 2009 - December 2011
Robert Erich	June 2009 - December 2011
Jake Pauline (Chair)	June 2010 – December 2012
Kelly Marshall (Vice Chair)	June 2010 - December 2012
Bob Steiner	June 2010 – December 2012

Special note:

The TLC recommended that the City Council modify the expiration of term dates of the members of the TLC from June 30 to December 31. In the past, newly appointed members joined the committee in mid-year (June). Because the district's budget operates on a fiscal year ending June 30, it was difficult for the new members of the committee to have gained the degree of background regarding the activities and responsibilities of the committee to effectively contribute to the discussions relating to the proposed upcoming budget. Going forward each new member will now serve his or her term in keeping with the modification, as approved by the City Council on March 15, 2011.

TLC Recommendations, Projects, and Work Product Review 2010-2011

- ✓ TLC regularly receives and reviews reports on maintenance staff activities see attached City Maintenance Quarterly Report Update covering the periods: 5/10/10-8/25/10, 8/25/10-1/24/11, and 1/24/11-5/23/11.
- ✓ Reviewed Incoming and outgoing correspondence between citizens and staff regarding various concerns and observations relating to landscaping and trail issues.
- ✓ Reviewed concept to use/accept donated wood chips in landscape areas (both medians and non-median-edge of roadway. Committee voted not to accept or allow donated wood chips for use by the Landscape District.
- ✓ Reviewed a request that the plantings in the roadway medians be more colorful. The committee reiterated that the TLC vision and concept plan submitted and approved by the City Council in 2006, addresses the guidelines for planting and maintaining medians throughout the Landscape District, and should be followed as approved.
- ✓ Complimented the City Maintenance staff for the commendable job they do in effectively managing the available water supply and the maintaining the entire irrigation system.
- ✓ Recommended that in light of the state's position regarding the future of Redevelopment funds, that the City Council consider allocating existing funds to qualified Landscape projects as soon as practicable.
- ✓ Reviewed the proposed landscape district budget for 2011-2012 and recommended that the City allocate more funds to the Clayton Rd. median work and the Library replanting projects, rather than to resurfacing trails.

ADOPT-A-TRAIL PROGRAM:

The Adopt-a-Trail program continues to thrive with TLC members working as volunteers to support the effort. The program aims to:

- Augment financing provided by Measure B
- Provide a venue for volunteers to help Clayton maintain and enhance its trail network
- Make the trails cleaner
- Celebrate the trails' sponsors and volunteers
- Foster civic pride through volunteerism, philanthropy, and cleanliness

The TLC has identified several trail segments to adopt. Each segment can have two adopters: a financial adopter and clean-up adopter.

Please see the APPENDIX section of this report for a current listing of adopters.

TLC RECOMMENDS BUDGET FOR FISCAL YEAR 2010-2011 TO CITY COUNCIL:

In May of 2011, the TLC submitted a proposed budget to the City Council, which was based on the existing FY 2010-2011 assessment, subject to adjustment by the Consumer Price Index (CPI), but capped to a 3% maximum increase per Measure B. Subsequently, the CPI was published at an increase of 2.8% and in July 2010, the City Council adopted an annual assessment of \$936,054, or \$213.37 per residential parcel or non-residential parcel acre. *A copy of the adopted budget and further explanation of Fund 210 is included in the APPENDIX section of this report.*

COMMUNITY OUTREACH:

Both the TLC and the District continue to reach out to the public to keep citizens informed of their activities in a variety of ways, which include:

- Inviting the public to attend quarterly TLC meetings
- Requesting comments and questions via email to cityinfo@ci.clayton.ca.us
- Posting meeting minutes at the City website at www.ci.clayton.ca.us
- Presenting summaries of TLC meetings at City Council meetings
- Publishing quarterly reports of maintenance staff activities
- Submitting articles about the District to the Clayton Pioneer newspaper

[Thanks to the Clayton Pioneer newspaper for publishing articles about the activities relating to Clayton's trails and landscaping. The articles, which appeared during the last fiscal year, are included in the *APPENDIX* section of this report].

APPENDIX

- 2011-2012 Adopted Budget
- Adopt-a-Trail Sponsors
- City Maintenance Quarterly Report(s) - Trails and Landscaping
- Articles published in the *Clayton Pioneer* during fiscal year 2010-2011
- Trails and Landscape Committee Informational brochure

City of Clayton
Landscape Mtn. Dist.
CFD 2007-1 Fund 2010

CITY OF CLAYTON
SPECIAL REVENUE ADOPTED BUDGET

Account Number	Account Name	Landscape Maintenance Fund 210			
		2009-10 Actual	2010-11 Adopted	2010-11 Projected	2011-12 Adopted
	Beginning Fund Balance	289,729			481,148
7111	Salaries/Regular	159,865	162,632	180,360	182,632
7112	Temporary Help	73,187	94,180	85,310	84,160
7113	Overtime	-	-	-	-
7218	LTD Insurance	1,456	1,645	1,263	1,057
7220	PERB Retirement	35,367	34,527	37,873	35,692
7231	Workers Comp Insurance	5,441	5,827	5,827	2,679
7232	Unemployment Insurance	5,708	5,938	5,938	6,599
7233	FICA and Medicare	7,388	9,661	9,667	9,661
7242	Uniform Allowance	-	-	-	-
7246	Benefit Insurance	34,835	33,239	32,709	31,175
7310	Supplies & Equipment	-	-	-	-
7311	Street Maint. Supplies	32,768	38,718	38,718	40,000
7314	Postage	-	-	-	-
7315	Materials	-	-	-	-
7316	Landscape Replacement / Traffic Safety	200	20,000	20,000	20,000
7327	Arterial Street Light Supplies	-	-	-	-
7328	Park Services	-	-	-	-
7329	Park Supplies	-	-	-	-
7331	Rentals/Leases	-	-	-	-
7332	Telecommunications	-	-	-	-
7335	Gas & Electric Serv.	27,467	28,840	28,840	29,000
7338	Water Service	71,995	180,000	145,000	180,000
7339	Equipment Lease	-	-	-	-
7341	Buildings & Grounds Mtn	-	-	-	-
7342	Machinery/ Equip Maint.	10,003	8,758	10,665	9,000
7343	Vehicle Maintenance	7,665	8,334	8,334	8,334
7344	Vehicle Gas, Oil, and Supplies	8,525	8,484	8,000	8,000
7345	Traffic Signal Maintenance	-	-	-	-
7346	HVAC Mtn & Repairs	-	-	-	-
7347	Depreciation / Deferred Mtn Projects	-	-	-	-
7351	Insurance Premiums	-	-	-	-
7352	Insurance Claim Expense	-	-	-	-
7373	Education and Training	-	-	-	-
7381	Property Tax Admin Cost	3,368	3,400	3,737	3,737
7384	Legal Notices	-	-	-	-
7385	Transpac Fees	-	-	-	-
7389	Misc. Expenses	704	-	-	-
7409	Street Sweeping Services	-	-	-	-
7412	Engineering Inspection	-	-	-	-
7413	Special Legal Services	-	-	-	-
7414	Auditing Services	-	-	-	-
7417	Janitorial Services	-	-	-	-
7419	Other Prof. Services	157,801	133,355	128,600	141,181
7420	Other Outside Services	-	-	-	-
7422	Technology/Pag Grant Channel Share	-	-	-	-
7423	Business Audit / Library Alde/Conquest Mgmt	-	-	-	-
7489	Loss on Sale of Asset	-	-	-	-
7481	Permit Fees	-	-	-	-
7485	Capital Equipment	-	-	-	-
7486	CERF Charges/Depreciation	12,936	12,936	12,936	13,600
7520	Project/Program/Other costs	-	260,000	260,000	330,000
7615	Property Taxes	2,292	2,300	2,332	2,370
7899	State Take Aways	-	-	-	-
8101	Transfer to General Fund	26,970	28,918	28,918	30,756
8101	Transfer to General Fund	-	-	-	-
8104	Transfer to Measure C	-	-	-	-
8111	Transfer to CIP Fund	-	-	-	50,000
	Asset Replacement	-	-	-	-
	Reserve Fund	-	-	-	-
	Total Expenses	685,461	1,082,272	1,056,635	1,210,723
	Revenues	918,895	915,434	930,621	941,054
	Annual Balance (Shortfall)	233,435	(166,838)	(126,014)	(269,669)
	Ending Fund Balance	617,164	450,325	491,149	221,480

B. Citywide Landscape Maintenance District – Fund No. 210

In June 2007, Clayton voters approved a replacement real property tax to continue funding the operation and maintenance of their citywide public landscaped areas. This annual tax is restricted to costs associated with: arterial and specified roadway medians and parkways, the trails system, the annual open space noxious weed abatement in Oakhurst hills, the annual open space and trails weed abatement for fire and public safety, landscape and turf irrigation and the monthly maintenance and special occasion operation of the "Clayton Fountain".

Maintenance of City Parks is not included as an authorized expense under the District's Act; park maintenance obligations fall to the City's General Fund. Citywide public landscaping services have always been funded by a special revenue tax levied on private properties throughout the City. The District is completing its 4th year of a 10-year approved operation (Measure B), and its citizens' oversight committee (Trails and Landscaping Committee, or TLC) meets periodically to ensure the promised maintenance standards and efficiencies are achieved with these special-purpose tax revenues.

Pursuant to the terms of voter-approved Measure B, the special tax rate may be modified annually by the change in the Consumer Price Index (CPI; San Francisco – Bay Area) from April to April. In no event shall the tax rate be increased by more than 3% each year. The CPI change (from April 2010 to April 2011) posted at 2.8%. The District's revenue projection has been increased by that factor accordingly and is set at \$936,054 for FY 2011-12 (add interest earnings of \$5,000 for total revenue budget of \$941,054). Pursuant to its oversight charge, the citizens' TLC considered the CPI change and the District's budget at its meeting on May 23rd and approved a motion to recommend the City Council implement the 2.8% CPI rate adjustment.

The Landscape Maintenance District opens the fiscal year with a projected positive equity of \$491,149, an amount lower than in previous years due to the approved appropriation of \$260,000 from the District's reserve (May 2010) to make certain landscape renovations and improvements in the District. Many of those improvement and landscape restoration projects were completed recently; one is underway, with the balance to be completed next fiscal year:

- a. Oakhurst Drive decorative pavers in narrow medians plus plants (done) \$70,000
- b. Tree replacements on Keller Ridge Drive (partially complete) \$16,600
- c. Deferred Tree Trimming (done) \$20,000
- d. Clayton Fountain renovation and replanting project (almost done) \$70,000
- e. Restore plants: Oakhurst Dr., old Marsh Creek Rd., Clayton Rd. (next) \$45,000
- f. Marsh Creek Circle replanting/headlight glare mitigation (done) \$19,400
- g. Replant Jeffrey Ranch Court island (not done yet) \$ 2,500

The installation and commencement of these landscape restoration and District improvement projects represent the success of the District in managing the voter's preference for a "pay-as-you-go" ballot tax measure. The defeated Measure "O" (2005) would have issued a revenue bond in its initial year to attack public improvements sooner but conservative Clayton voters disliked the higher annual assessment and the bonded indebtedness of the District. Entering the District's 5th year of operation has allowed the accumulation of reserves to accomplish many of the same objectives, just slightly later than many might have wished.

Noteworthy expenses of the District include its annual weed abatement Citywide (\$35,000 for the fire season), and the huge expense of \$53,416 to abate noxious and exotic weeds in the Oakhurst Hills (a condition of project approval for the Oakhurst residential development). Metered water service is set at its historical expense of \$180,000 per year by the lifting of the drought restriction last year; this expense can fluctuate wildly depending on seasonal climates and strange weather patterns. Personnel services for this labor-intensive work accounts for 30% of the District's budget this year (\$343,845), down slightly from last year's portion of 33%. A gradual shift in labor deployment for services in the District to temporary/seasonal workers from the City's permanent workforce of five (5) has lessened the expense burden, which allows the availability of more funds to install beautification and improvement projects in the Landscape District.

As approved by Measure "B" voters, the District's budget includes an annual expense of \$20,000 (Account 7316) for the purchase of replacement plants. The District also contributes its annual allocation of \$13,500 to the City's Capital Equipment Replacement Fund (CERF), from which Maintenance vehicles and equipment are purchased for use in maintaining the Landscape District. An expense of \$30,756 (3.3% of annual District revenue) is transferred to the City's General Fund to pay for administration and overhead of the City (e.g. telephones; payroll processing; accounts receivable and payable; District direction) attributable to the District's annual operations.

Consistent with the District's stated mission to maintain and improve the Landscape District, it is recommended we continue our aggressive program to further enhance the appearance and sustainability of the District's plants and landscaping. Therefore, the proposed FY 2011-12 Budget calls for an allocation of \$330,000 from the District's reserves this year to perform the following enhancements:

1. Median and Roadway Re-Landscaping Projects	\$230,000
a. Clayton Road, Oakhurst to old Marsh Creek Road	\$115,000
b. Clayton Road, old Marsh Creek Road to Mitchell Canyon Road	\$115,000
2. Trail Resurfacing (remainder of Bruce Lee Trail)	\$ 50,000
3. Master Remote Computer Controller for all Irrigation Systems	\$ 30,000
4. Trail Crack-Sealing and Minor Repairs	\$ 10,000
5. Tree Replacement and Trimming	<u>\$ 10,000</u>
Total:	<u>\$330,000</u>

Further, it is proposed the District transfer an additional \$50,000 from its reserves to the City's Capital Improvement Project Budget (CIP No. 10421) to design and install the necessary repairs on a portion of the Cardinet Trail that is being eroded by the scouring of Mt. Diablo Creek. This Cardinet Trail Restoration Project will require the involvement and permit approvals issued by the CA Fish and Game Department and other environmental regulators to ensure proper treatment of the sensitive habitat.

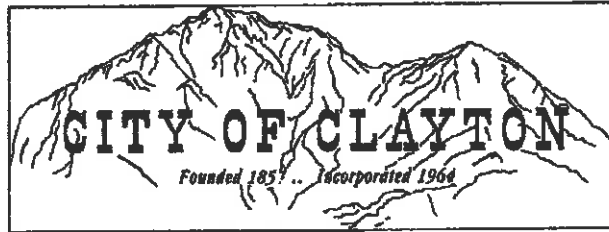
With all of these actions, the District's ending fund balance on 30 June 2012 will still be a healthy \$221,480, which equates to a reserve of 24% of the annual revenue. The reserve status is confirmation the City does not siphon "surplus" monies of the District into its General Fund and uses the special tax revenues for the intended purposes.

Adopt a Trail updated as of 10/12/11

Adopters/Revenues

Name	Sponsor Type	Trail Section	Amount Recvd	Date \$ Recvd	Ag. recvd	Start Date	Renewal
Pauline Family	Volunteer Labor	Cardinet Trail (Library - Lydia Ln Pk)	\$200	2/1/2011	Yes	3/1/2011	3/1/2013
Black Diamond Electric	Financial	Cardinet Trail (Library - Lydia Ln Pk)	\$1000	2/1/2011		3/1/2011	3/1/2013
Passport2Clayton (P2C)	Volunteer Labor	Bruce Lee Trail (Upper Easley Trail)	\$200	2/1/2011	Yes	3/1/2011	3/1/2013
Passport2Clayton (P2C)	Financial Sponsor	Bruce Lee Trail (Upper Easley Trail)	\$1000	2/1/2011		3/1/2011	3/1/2013
Employees of							
CD Federal Credit Union	Volunteer Labor	Blue Oak Trail	\$200	2/9/2011	Yes	3/1/2011	3/1/2
Discovery Builders	Financial Sponsor	Blue Oak Trail	\$1000	2/17/2011		3/1/2011	3/1/20
Siegel Family	Volunteer Labor	Lower Easley Trail	\$200	2/1/2011	Yes	3/1/2011	3/1/2013
Diablo Ford	Financial Sponsor	Lower Easley Trail	\$1000	2/1/2011		3/1/2011	3/1/2013
<u>Available</u>							
<u>Available</u>							
Dan Pauline							
Banister Electric	Volunteer Labor	Cardinet Trail (Safeway - Lydia Ln Pk)	\$200	2/1/2011	Yes	3/1/2011	3/1/2013
Adopt a Trail Expenses	Financial Sponsor	Cardinet Trail (Safeway - Lydia Ln Pk)	\$1000	2/1/2011		3/1/2011	3/1/201
<u>Date</u>	<u>Purpose</u>						
3/8/2009	19.5 hrs maintenance temp labor make/ install signs		\$219.00				
4/17/2009	materials for sign posts		\$1527.34				
6/23/2009	signs printing (bay area barricade)		\$98.87				
6/30/2009	t-shirts		\$289.51				
8/9/2009	wood for future sign posts (Dolan's Lumber)		\$595.15				
8/9/2009	sign printing (Bay Area Barricade)		\$10.93				
5/14/10	Clayton Pioneer Ad		\$200.00				
Total Expenses to date			\$2940.08				
Renewal and New as of 2/1/11			\$5050				
Prior balance			\$4200				

5/1/2011 Account Balance: \$4200 - \$2940.08 + \$5,050 = \$6309.92



**CITY MAINTENANCE
QUARTERLY REPORT
UPDATE
TRAILS AND LANDSCAPING DISTRICT
5/15/10 to 8/25/10**

- Completed the second trim of the landscape for the last fiscal year and started on the first trim of fiscal year 2010/11. The following areas have been trim over the past quarter; Old Marsh Creek Road, Oakhurst Drive, Eagle Peak Ave, Clayton Road inbound from city limits to Mt Zion, and Clayton Road out bound from Library to Mitchell Canyon Road.
- Spot spray herbicides and pull weeds in the Landscape District Citywide
- Sprayed broad leaf herbicide on the lawns in the Landscape District
- All irrigation systems are turn on and we continued to make repairs to the irrigation systems within the Landscape District.
- Completed the weed abatement for fire breaks in the Landscape Districts open space. Work was completed by the end of June.
- Completed more contract work on trimming trees along Clayton Road from City Hall to Mitchell Canyon Road. Also trim the median trees on Clayton Road from City limits to El Camino Drive.
- Started the bricking of noses along Oakhurst Drive. We have removed the remaining plants and dug the soil out in preparation for the installation of base rock, sand, and brick.
- Started the irrigation inventory and evaluation report with field testing of irrigation systems to gather all needed information for the report.

City of Clayton Maintenance Staff
LANDSCAPE MAINTENANCE DISTRICT
STATUS REPORT
UPDATE
TRAILS & LANDSCAPING
PERIOD COVERING 1/24/11 to 5/23/11

- Spot spray herbicides and pull weeds in the Landscape District Citywide.
- Completed additional contract work on safety trimming of trees along Clayton Road from Peacock Drive to the Middle School that were hanging into the Trail.
- Trimmed all the median trees along Old Marsh Creek Road from Center Street to the Middle School, trimmed all median trees on Peacock Drive, and the north side of Oakhurst Drive from Eagle to Eagle Avenue.
- Completed the Oakhurst Road median bricking project with the spot planting of new ground cover and replacement trees
- Near Completion of the Marsh Creek Circle re-plant. Still have several trees to plant and some spot placement of shrubs around trees to be installed.
- Started the replant of the Water Fountain with completion by the beginning of June. Installed bio-filter planter areas and concrete mow strips and decorative moss rock boulders.
- Started to do our second Trim of the Landscape with Eagle Peak Avenue completed.
- Started to turn on irrigation systems and make irrigation repairs within the Landscape District City Wide.
- Started the weed abatement for fire control with the tilling of Hoyer Hill. Weed cutting behind homes and mowing will start after the threat of rain stops.

QUARTERLY REPORT UPDATE TRAILS & LANDSCAPING

8/25/10 to 1/24/11

- Completed the winter trimming of Crape Myrtle Trees City wide
- Spot spray herbicides and pull weeds in the Landscape District Citywide
- Sprayed pre-emergent herbicide in the Landscape District for winter and spring weed control.
- Sprayed pre-emergent and post emergent herbicide along the main trails for winter and spring weed control.
- All irrigation systems are turn off within the Landscape District.
- Completed more contract work on safety trimming of trees along Oakhurst Drive from Yolanda Circle to City limits that were hanging into the sidewalk and traffic lanes. Safety removal of dead trees on the hillside at the Main Street off ramp. Trimmed the trees along Keller Ridge Drive and Marsh Creek Circle as part of the replant projects.
- Completed the bricking of noses along Oakhurst Drive. We have started a replant along Oakhurst Drive in the median. This includes the installation of a new irrigation system from Eagle Peak Dr to Indian Head Way including bubblers to the trees. These systems meet the new water ordinance guidelines.
- Had some minor storm damage within the Landscape District with a tree falling on Clayton Road in front of City Hall, a large Oak and Willow tree falling on the trail by Lydia Lane Park.
- Spread wood chips in some dirt areas in the Landscape District one area was along Lydia Lane and the other area on Marsh Creek Road in the medians islands by Diablo Parkway (these wood chips were donated by Warner Tree Experts)
- Had the Peacock Creek sign lettering replaced existing lettering had deteriorated and was not staying mounted to the landscape planter wall (see attached photo)

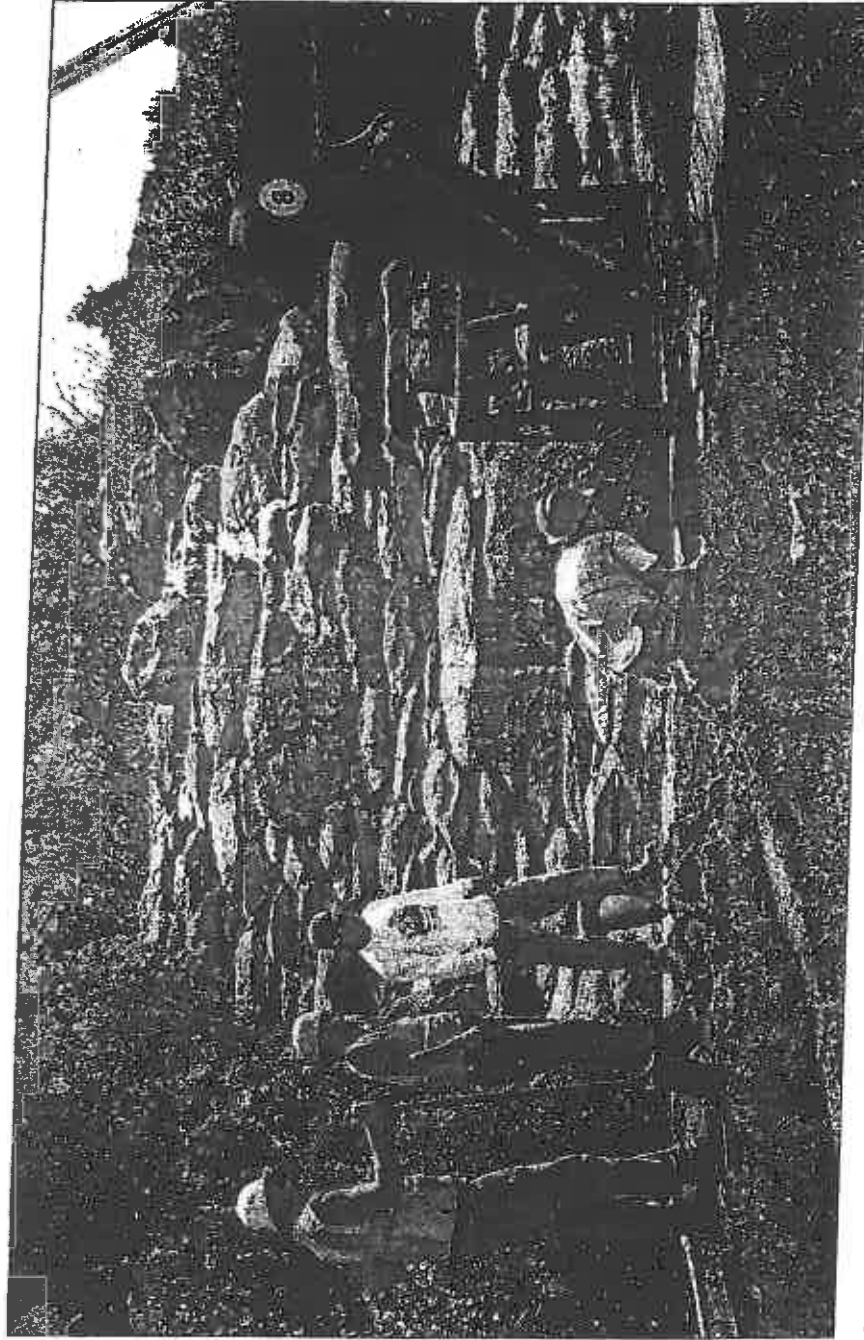
Clayton fountain gets new look

TAMARA STEINER
Clayton Pioneer

The city's fountain at Oakhurst Blvd. and Clayton Road will have a whole new look in a few weeks as the city moves away from the high water use and labor intensive lawns and annuals that were severely damaged during the last drought.

Designed by city maintenance supervisor John Johnston, the new landscaping will incorporate boulders and stonework among drought tolerant and low maintenance shrubs and trees. A narrow strip of lawn will stretch across the front of the fountain. The half-circle of flowers will go, says Johnston. "They only look good for a little while. Then the spot is just full of dead flowers."

The \$70,000 fountain project is one of seven Landscape Maintenance District projects slated for completion this year. The District allocated \$260,000



CITY WORKERS MANEUVER A BOULDER INTO PLACE AT THE CLAYTON FOUNTAIN as part of the new design and replanting effort to replace drought-damaged landscaping with lower-maintenance hardscape and shrubs.

Tamara Steiner/Clayton Pioneer

See Fountain, page 7

Clayton Pioneer 4/15/11

Fountain, from page 1

for all seven projects, which include replacement of drought damaged plants and pavers in the medians along Clayton Rd. and Oakhurst Blvd. Keller Ridge Drive will get some new trees and Marsh Creek Circle across from DVMS was replanted last month.

The city's gateway, locally known as Daffodil Hill, at

Marsh Creek and Clayton Roads is a Clayton Business and Community Association Project.

The hardscape and new monument sign were installed in the summer of 2009.

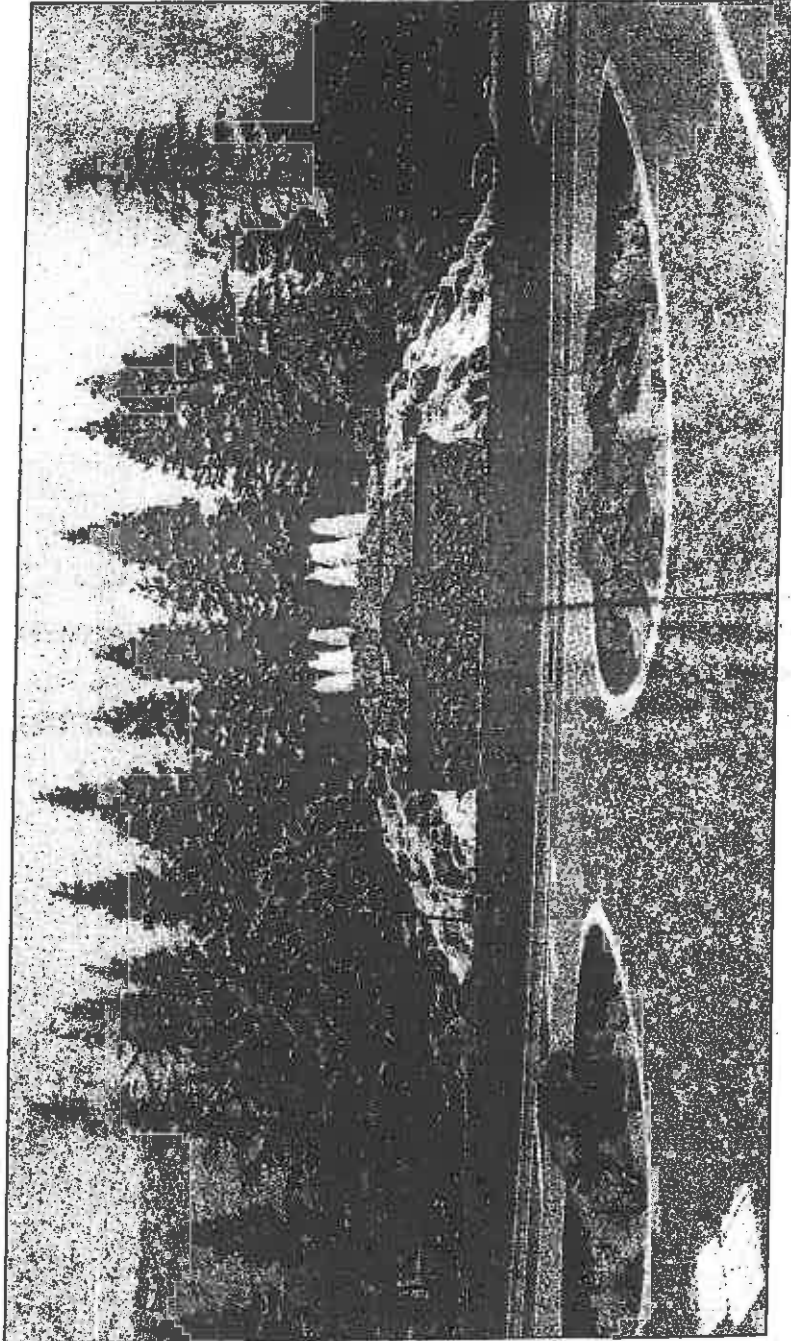
A well on the library grounds will provide irrigation for the hill plants, but the city wanted to wait until after the drought to

install new landscaping. "Putting in new plants during a drought sends a mixed message to the public," explained Gary Napper of the city's decision to wait.

Plans for the hill's design are complete and are ready to go out for bid, according to CBCA committee chair Maryann Lawrence. Pending review by the city and CBCA approval of the cost, the hill could be finished by summer.

Clayton Pioneer 4/15/11

Clayton Fountain still green, less thirsty



Tamara Steiner/Clayton Pioneer

THE NEW FOUNTAIN LANDSCAPING AT THE CORNER OF CLAYTON ROAD AND OAKHURST BLVD., was finished last week. The landscaping is low-maintenance, drought tolerant and complies with water conservation and stormwater management requirements. The fountain is a favorite spot for local photographers.

TAMARA STEINER
Clayton Pioneer

City crews finished the re-landscaping of the Clayton Fountain last week with a splash of green sod across the front.

The new design is drought-tolerant and low maintenance and reduces the previous lawn area by 65 percent. Bioswales in the median and at the east end of the fountain are designed to manage storm water, filtering it and sending it back into the ground instead of allowing it to run off into the storm drains.

The new landscaping replaces the high maintenance, water thirsty lawns and annuals that died in last year's drought.

After some initial criticism of the starkness of the design, public reaction to the finished product has been overwhelmingly positive, says Maintenance Supervisor Mark Janney.

See Fountain, page 17

Clayton Pioneer 6/24/11

Fountain, from page 1

"I know that there were some negative comments about the boulders in the Pioneer Letters to the Editor," says Clayton resident Linda Pinder. "But now that the actual plantings are in I think it

looks terrific. I think this will once again be a lovely setting for prom and wedding photos."

The fountain project is one of seven Landscape Maintenance District projects slated for completion this year.

The city has allocated \$260,000 for all seven which will include median landscaping and pavers along Clayton Road and Oakhurst Blvd and new trees on Keller Ridge Drive.

The city's gateway, known as Daffodil Hill, is a project of the CBCA which is currently in the design and bidding process.

Clayton Pioneer 6/24/11

WHAT IS YOUR TRAILS AND LANDSCAPE COMMITTEE?

The TLC (Trails and Landscape Committee) is made up of 6 volunteers, your neighbors & friends, from the Clayton community. The TLC was formed by the Clayton City Council in August 2007 to help the City implement the voter-approved plan to manage the current and future needs of the City-wide Landscape Maintenance District (the CCLMD).

The TLC serves as the financial oversight committee and provides short-, mid-, and long-term implementation guidance to the City Staff and City Council regarding the spending of the special voter approved funds that can only be used for spending within and for the Landscape Maintenance District.

The Landscape Maintenance District consists of the roadway edge and roadway median landscaping, trail maintenance and fire abatement on trails and open space. City parks & the running of the Clayton Fountain are not included in the District.

The TLC in Action!

The Trails and Landscape Committee meets on a quarterly basis on the 3rd Monday evenings of the month (7pm) at the City Library (Hoyer Hall Meeting Room) 6125 Clayton Road. Residents of Clayton are encouraged to attend these meetings to hear what is being proposed and to provide input and get their questions answered.

The TLC will be evaluating use of targeted hardscape and limited replacement planting options for drought losses as funds and water restrictions allow.

Meeting agendas are posted on: City web site at www.ci.clayton.ca.us
City Hall, 6000 Heritage Trail;
Clayton Library, 6125 Clayton Road;
Ohm's Bulletin Board, 1028 Diablo St

Please direct any questions or concerns to the City of Clayton via the website or address above.

Your Trails and Landscape Committee Members

Jake Pauline (Chair)
Robert Erich
Kelly Marshall
Lorraine Mole
Virginia Siegel
Bob Steiner

IMPORTANT INFORMATION

FROM YOUR

CLAYTON TRAILS and LANDSCAPE COMMITTEE



2010 - 2011



WHAT ARE THE STANDARDS and PRIORITIES of the District and the TLC?

- Firebreaks are Mandatory.
- Weeds are now cut along major trails and creeks twice yearly.
- Trees are trimmed for safety purposes first.
- Irrigation breaks are repaired as needed.
- Public roadway landscaping is trimmed twice yearly.
- Landscape areas are now fertilized one time a year as needed.
- Limited funds for targeted improvements of \$20,000 each year.

TLC'S STRATEGIC FOCUS

- Take Care of what we have before planting something new
- Remove unwanted expenditures and control costs with strict oversight.
- Create Equity in the District.
- Implement Cost-Effective measures to improve irrigation and infrastructure and functions.
- Invest in improved equipment as a means to increase maintenance efficiency and effectiveness.
- Implement Seasonal and situational based labor to minimize costs.

HOW IS THE DISTRICT FUNDED ?

The District is funded by a special 10-year special parcel tax "Measure B" passed by the Clayton voters in June 2007 that is currently \$ 207.56 per year that appears on your property tax bill. This assessment can only be increased for inflation with a maximum annual increase cap of 3% per year. This is the only source of funding for the Landscape District supplies, electricity, irrigation, water, and labor. All funds are kept separate and only used for the voter approved Landscape District expenses. *(The operation of the Clayton Fountain was not approved by voters to be included in the District).*



QUICK FACTS of Your Landscape Maintenance DISTRICT --YOUR "FRONT YARD"

- The District landscape covers over 2,000,000 sq. ft.
- There are 40,700 sq. ft. of lawns and flowerbeds.
- There are over 2,871 trees in the City.
- There are 515 acres of open space.
- There are 7 miles of creek side trails and 20 miles of open space trails.
- There are about 50 street islands and medians.
- The District uses equivalent of only three full time staff and includes the use of some seasonal and volunteer workers as needed.
- From May 2008 to May 2010 the Contra Costa Water District had mandatory water reductions of 45% for the Landscape District. The District priorities was to preserve trees, then shrubs and to eliminate watering of lawns and groundcovers to stay within the limits and to avoid financial penalties through even higher water costs.
- Adopt-A- Trail program established to encourage trail maintenance funding and volunteering.