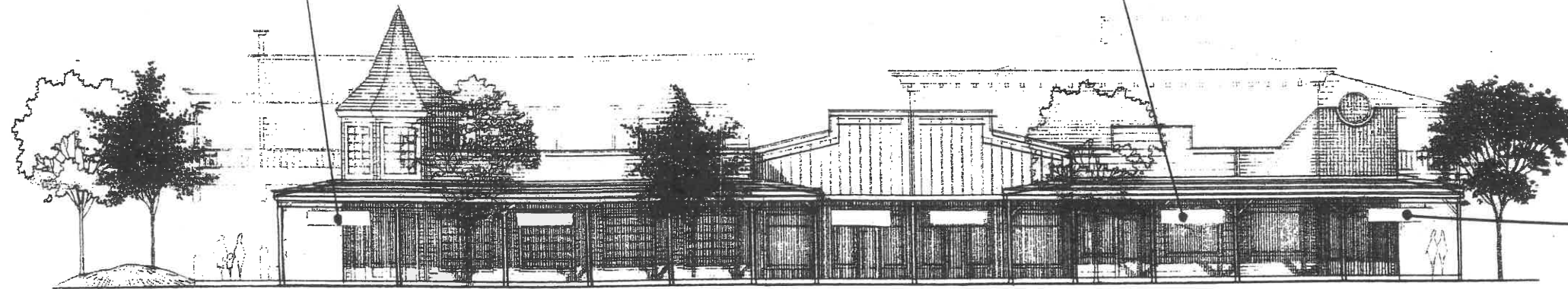


CORNER TENANT SIGN (TYPICAL)

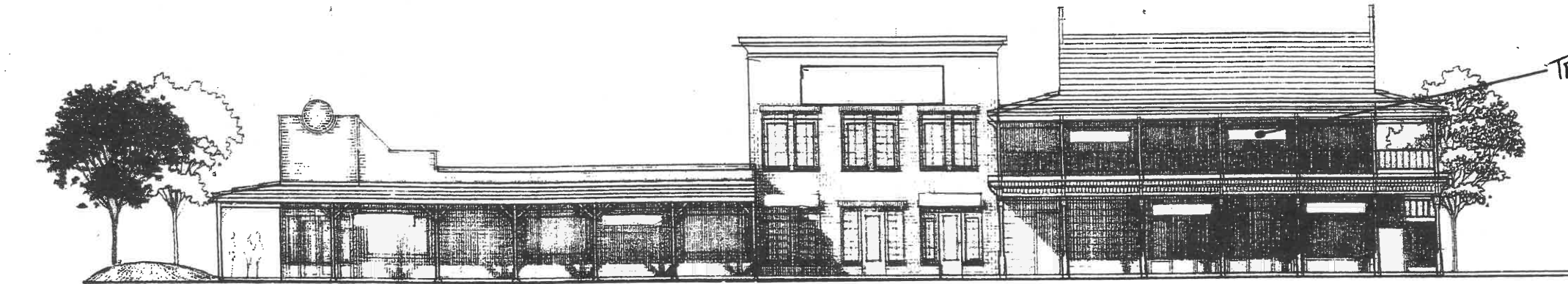
TENANT SIGN (TYPICAL)



CORNER TENANT SIGN (TYPICAL)

WEST ELEVATION

TENANT SIGN (TYPICAL)



SOUTH ELEVATION

BUILDING IDENTIFICATION SIGN

TENANT SIGN (TYPICAL)



NORTH ELEVATION

RECEIVED

OCT 8 2003

CLAYTON COMMUNITY DEVELOPMENT DEPT.

VILLAGE OAKS MASTER SIGN PLAN
Sign Locations

REVISIONS

DATE: 10/3/03
JOB NO. 20000
DRAWN BY: [Signature]
CHECKED BY: _____

**VILLAGE OAKS MASTER SIGN PLAN CRITERIA
6200 CENTER STREET**

Applies to the Village Oaks Master Sign Plan Sign Location, date stamped October 8, 2003, and to the Monument Sign Elevation dated January 30, 2007 (Sign Permit SP-07-03)

PARAMETER	TENANT SIGN	CORNER TENANT SIGN	WINDOW SIGN	MONUMENT SIGN	RENT/LEASE SIGN
Sign Type	Suspended	Suspended	Window	Monument	Window or hanging from monument sign
Sign Height (Maximum)	15 inches	24 inches	To be determined by tenant	5 feet above existing grade	To be determined by owner
Sign Length (Maximum)	8 feet	8 feet	To be determined by tenant	3 feet (width)	To be determined by owner
Sign Area (Maximum)	10 square feet	16 square feet	10 square feet or 25% of total glass area (whichever is less) per tenant space or per corner tenant space elevation. Sign area may be split between window and glass door.	15 square feet	Window Sign: 4 square feet Hanging Sign: 2 square feet
Text Font	To be determined by applicant	To be determined by applicant	To be determined by applicant	P.T. Barnum or Old West-style font	To be determined by owner
Text Height (Maximum)	12 inches	12 inches	To be determined by tenant	9 inches	To be determined by owner
Lines of Text (Maximum)	One	Two	To be determined by tenant	Two	To be determined by owner
Registered Trademark Logos and Colors	Allowed, with registered trademark colors	Allowed, with registered trademark colors	Allowed, with registered trademark colors	Not Applicable	Allowed, with registered trademark colors
Sign Location	Refer to Village Oaks Master Sign Plan sign locations	Refer to Village Oaks Master Sign Plan sign locations	In window or glass door of tenant space	In landscape area on Marsh Creek Road frontage between building and Marsh Creek Road. Sign must be outside clear vision triangle for driveway. Sign shall be installed on private property.	In window or door of tenant space, and Hanging from monument sign
Sign Colors	Brown background with black, gold, and/or white lettering. Alternatively, registered corporate colors may be used for lettering.	Brown background with black, gold, and/or white lettering. Alternatively, registered corporate colors may be used for lettering.	Brown background with black, gold, and/or white lettering. Alternatively, registered corporate colors may be used for lettering.	Brown background with black, gold, and/or white lettering	Window sign colors to be determined by owner. Hanging sign colors to be brown field with black, gold, and/or white letters
Sign Materials	Carved wood or wood-like materials	Carved wood or wood-like materials	Not Applicable	Raised wood-appearing letters or recessed letters on wood-appearing base	Window sign: To be determined by owner Hanging sign: Wood-appearing
Sign Illumination	Illumination shall be projected onto the sign face with the source of illumination shielded from view	Illumination shall be projected onto the sign face with the source of illumination shielded from view	Not Allowed	Illumination shall be projected onto the sign face with the source of illumination shielded from view	Not Allowed
Maximum Number of Signs Allowed	One per tenant space	One per corner tenant space. Alternatively, corner tenants may install two signs (one on each building frontage) which shall comply with the "Tenant Sign" standards.	One per door and one per window (maximum of two) for tenant space. One per window per elevation and one per door for corner tenant space (maximum of four).	One Double-Faced Sign	Window Sign: one per tenant or corner tenant space Hanging Sign: One double-sided
Business Inoperative for 30 Days	Sign shall be removed within 30 days	Sign shall be removed within 30 days	Signs shall be removed within 30 days	Not Applicable	Sign(s) shall be removed within 10 days of lease or rental of tenant space

Notes: Real-estate signage for sale of the site shall conform with the Sign Provisions of the Municipal Code.

Stained-glass window signs located above the walkway canopy on the northwest and southwest corners of the building are only allowed to contain the word "Clayton".

Dated: January 30, 2007